

CONCEPT DEVELOPMENT PLAN

LAKE MULWALA

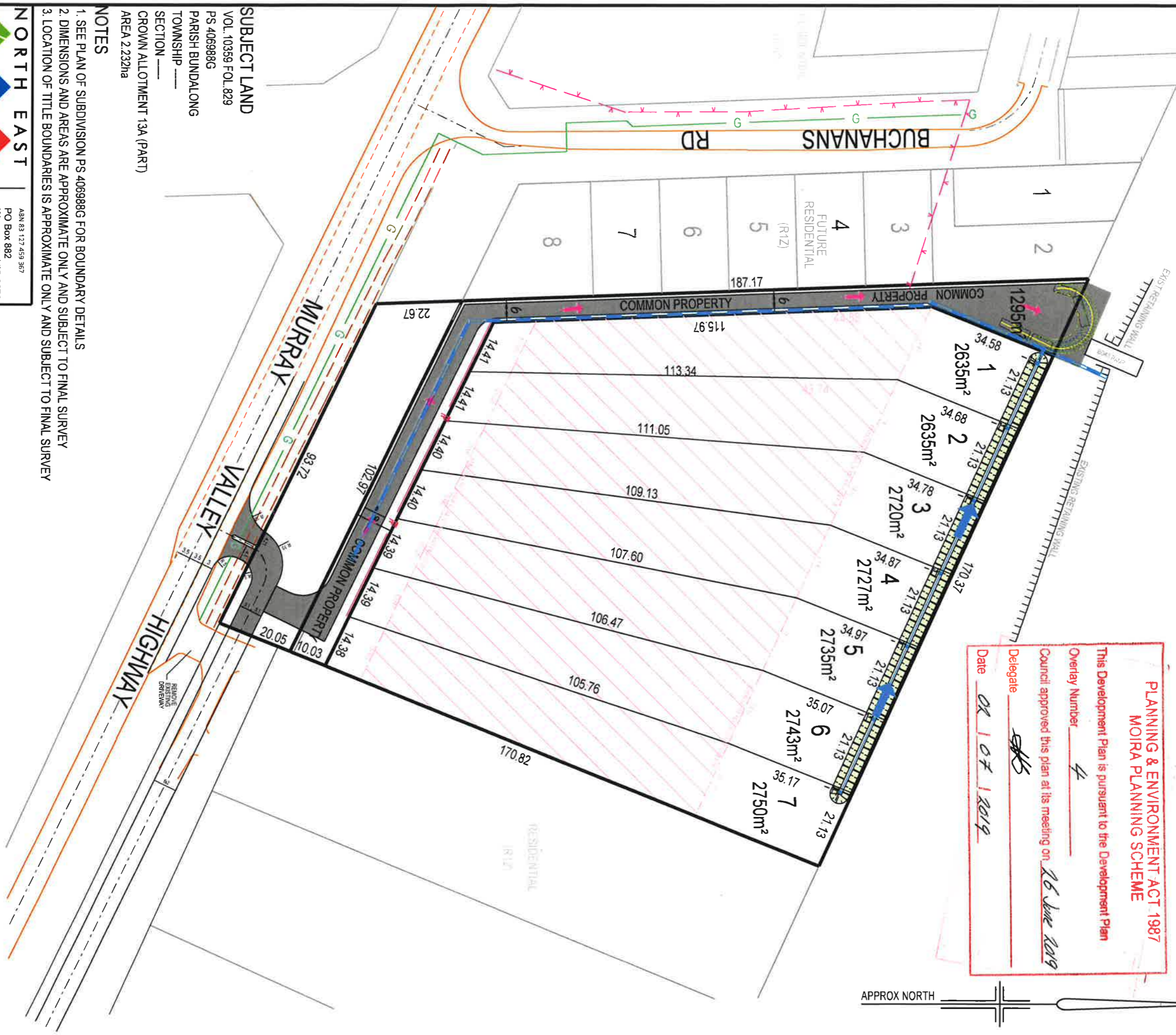
PLANNING & ENVIRONMENT ACT 1987
MOIRA PLANNING SCHEME

This Development Plan is pursuant to the Development Plan
 Overlay Number 4

Council approved this plan at its meeting on 26 June 2019
 Delegate AKS

Date 07 July 2019

APPROX NORTH



SUBJECT LAND
 VOL. 10359 FOL. 829
 PS 4069886
 PARISH BUNDALONG
 TOWNSHIP _____
 SECTION _____
 CROWN ALLOTMENT 13A (PART)
 AREA 2.232ha

NOTES

1. SEE PLAN OF SUBDIVISION PS 4069886 FOR BOUNDARY DETAILS
2. DIMENSIONS AND AREAS ARE APPROXIMATE ONLY AND SUBJECT TO FINAL SURVEY
3. LOCATION OF TITLE BOUNDARIES IS APPROXIMATE ONLY AND SUBJECT TO FINAL SURVEY

NORTH EAST



ABN 83 127 459 367
 PO Box 882
 Wangaratta VIC 3676
 Mobile 0407 216 710
 Fax 03 5721 6701
 matt@nsd.com.au
 www.nsd.com.au

PLAN REFERENCE:
Y1010
 VERSION **16**
 16-10-18
 Y1010DDPV16.DGN

ORIGINAL SHEET SCALE
 SIZE A3 1:1000

SCALE
 LENGTHS ARE IN METRES

0 10 20 30 40 50 60 70 80 90 100mm

Woodlands Motel Development
8308 MURRAY VALLEY HIGHWAY, YARRAWONGA
- GEOFF HICKS

SHEET 10F SHEETS