



# Imaged Document Cover Sheet

The document following this cover sheet is an imaged document supplied by LANDATA®, Secure Electronic Registries Victoria.

Document Type	<b>Plan</b>
Document Identification	<b>LP020328</b>
Number of Pages (excluding this cover sheet)	<b>1</b>
Document Assembled	<b>03/04/2024 15:35</b>

**Copyright and disclaimer notice:**

© State of Victoria. This publication is copyright. No part may be reproduced by any process except in accordance with the provisions of the Copyright Act 1968 (Cth) and for the purposes of Section 32 of the Sale of Land Act 1962 or pursuant to a written agreement. The information is only valid at the time and in the form obtained from the LANDATA® System. None of the State of Victoria, LANDATA®, Secure Electronic Registries Victoria Pty Ltd (ABN 86 627 986 396) as trustee for the Secure Electronic Registries Victoria Trust (ABN 83 206 746 897) accept responsibility for any subsequent release, publication or reproduction of the information.

The document is invalid if this cover sheet is removed or altered.

PLAN OF SUBDIVISION  
OF PART OF CROWN ALLOTMENT 14<sup>A</sup> SECTION C  
PARISH OF KATUNGA

COUNTY OF MOIRA

VOL 4981 FOL 110

Measurements are in Feet & Inches  
Conversion Factor  
FEET X 0.3048 = METRES

LP 20328

EDITION 1  
PLAN MAY BE LODGED  
20-10-1950

COLOUR CODE

BL=BLUE  
R1 & R2 =BROWN

**APPROPRIATIONS**

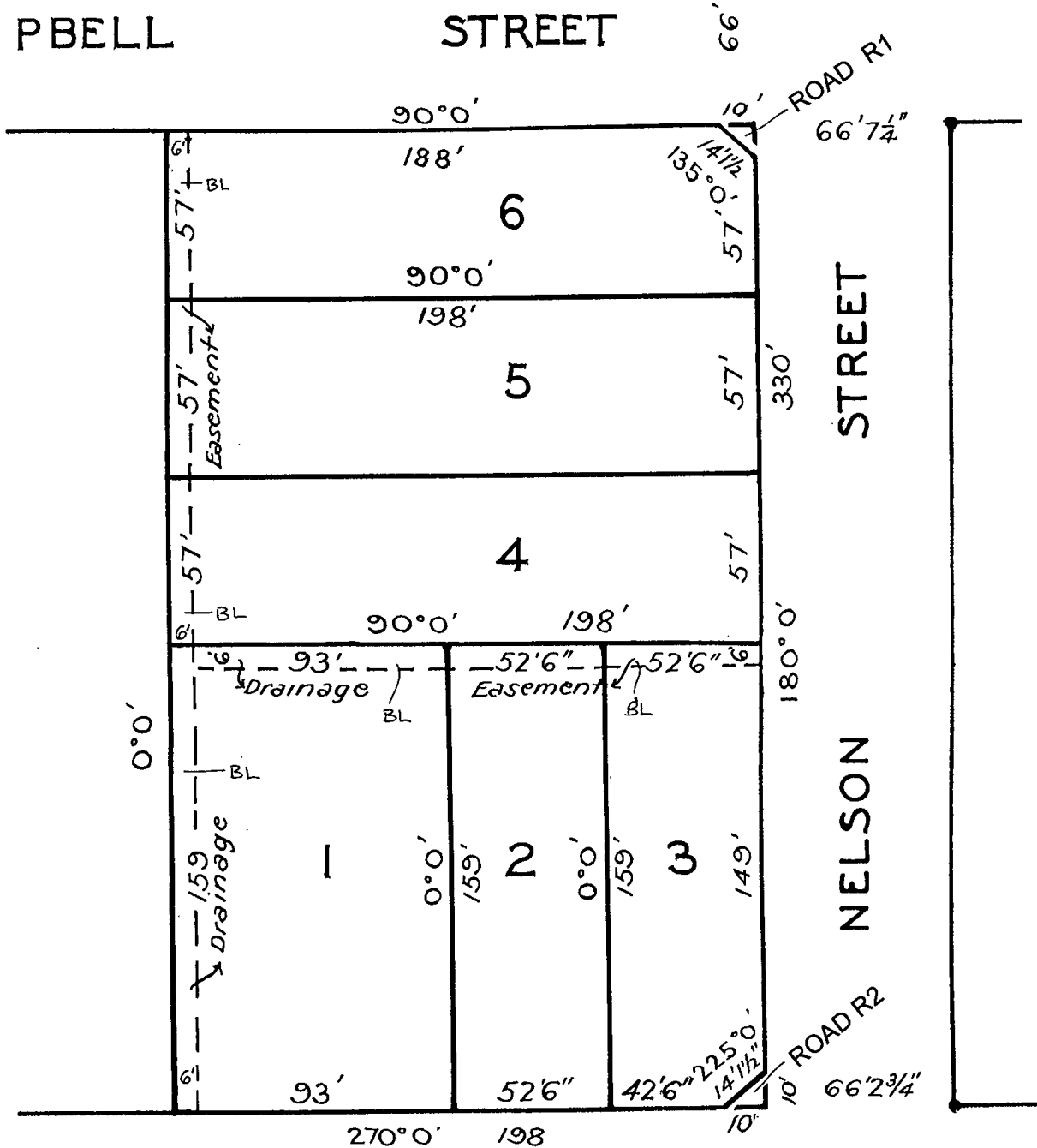
THE LAND COLOURED BLUE  
IS APPROPRIATED OR SET  
APART FOR EASEMENTS OF  
DRAINAGE

THE LAND COLOURED BROWN  
IS APPROPRIATED OR SET  
APART FOR EASEMENTS OF  
WAY AND DRAINAGE

CAMPBELL

STREET

66'



ROAD R1  
66'7 1/4"

STREET

NELSON

ROAD R2  
66'2 3/4"

SAXTON

STREET

67'