



# Imaged Document Cover Sheet

The document following this cover sheet is an imaged document supplied by LANDATA®, Victorian Land Registry Services.

Document Type	<b>Plan</b>
Document Identification	<b>LP004122</b>
Number of Pages (excluding this cover sheet)	<b>1</b>
Document Assembled	<b>26/03/2021 09:51</b>

**Copyright and disclaimer notice:**

© State of Victoria. This publication is copyright. No part may be reproduced by any process except in accordance with the provisions of the Copyright Act 1968 (Cth) and for the purposes of Section 32 of the Sale of Land Act 1962 or pursuant to a written agreement. The information is only valid at the time and in the form obtained from the LANDATA® System. None of the State of Victoria, LANDATA®, Victorian Land Registry Services Pty. Ltd. ABN 86 627 986 396 as trustee for the Victorian Land Registry Services Trust ABN 83 206 746 897 accept responsibility for any subsequent release, publication or reproduction of the information.

The document is invalid if this cover sheet is removed or altered.

PLAN OF SUBDIVISION OF  
PART OF CROWN ALLOTMENT 3  
SECTION 2  
PARISH OF NARIOKA

COUNTY OF MOIRA

VOL. 1729 FOL. 722

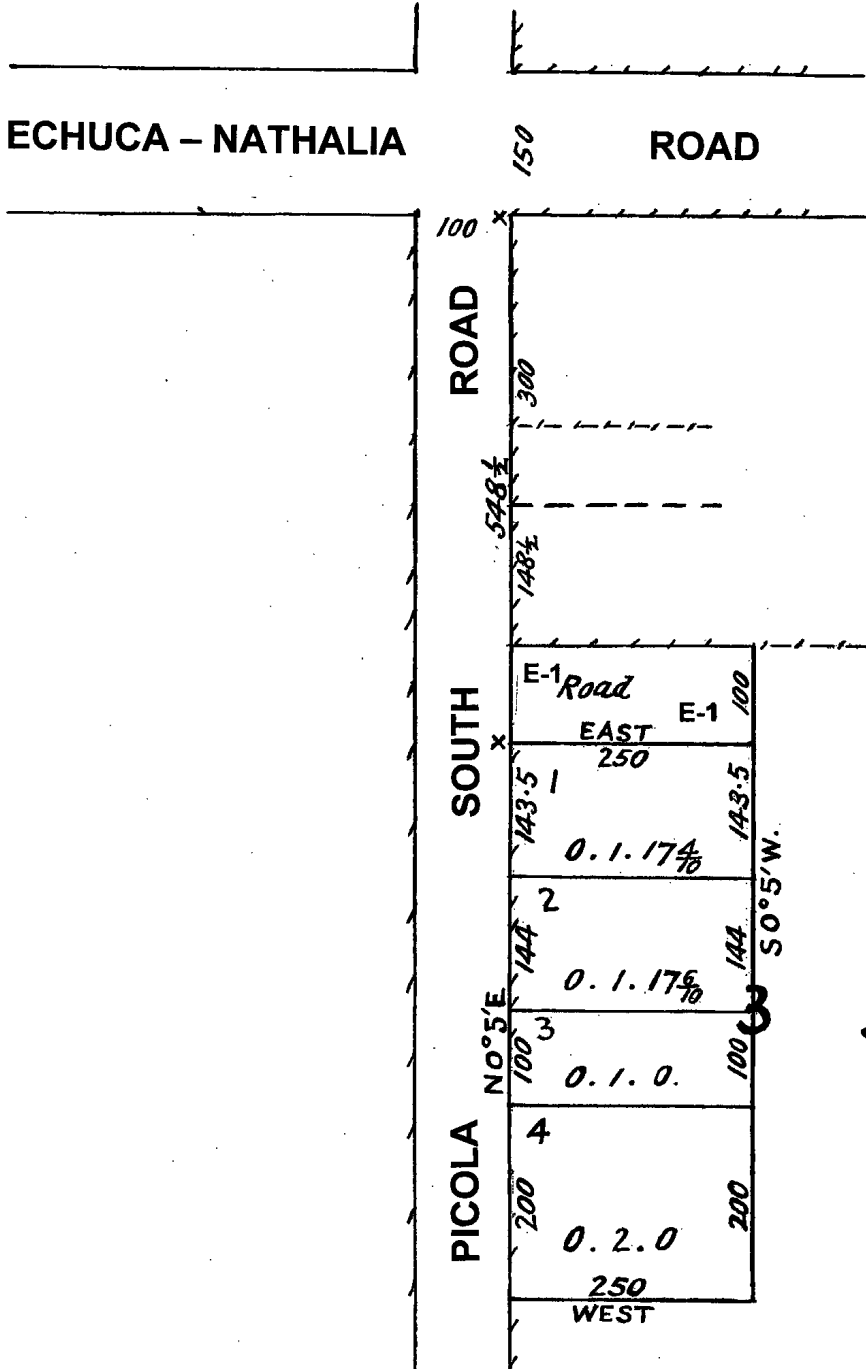
Measurements are in Links  
Conversion Factor  
LINKS x 0.201168 = METRES

LP 4122

EDITION 1

PLAN MAY BE LODGED

28 -06 -1899



COLOUR CODE

E-1 = BROWN

ROADS COLOURED BROWN

STREET NAME AMENDED

FROM: GOVT. ROAD  
TO: ECHUCA - NATHALIA ROAD  
VIDE: CORR. 1986- 49193

STREET NAME AMENDED

FROM: GOVT. ROAD  
TO: PICOLA SOUTH ROAD  
VIDE: CORR. 1986 - 49193

SEC. 2